

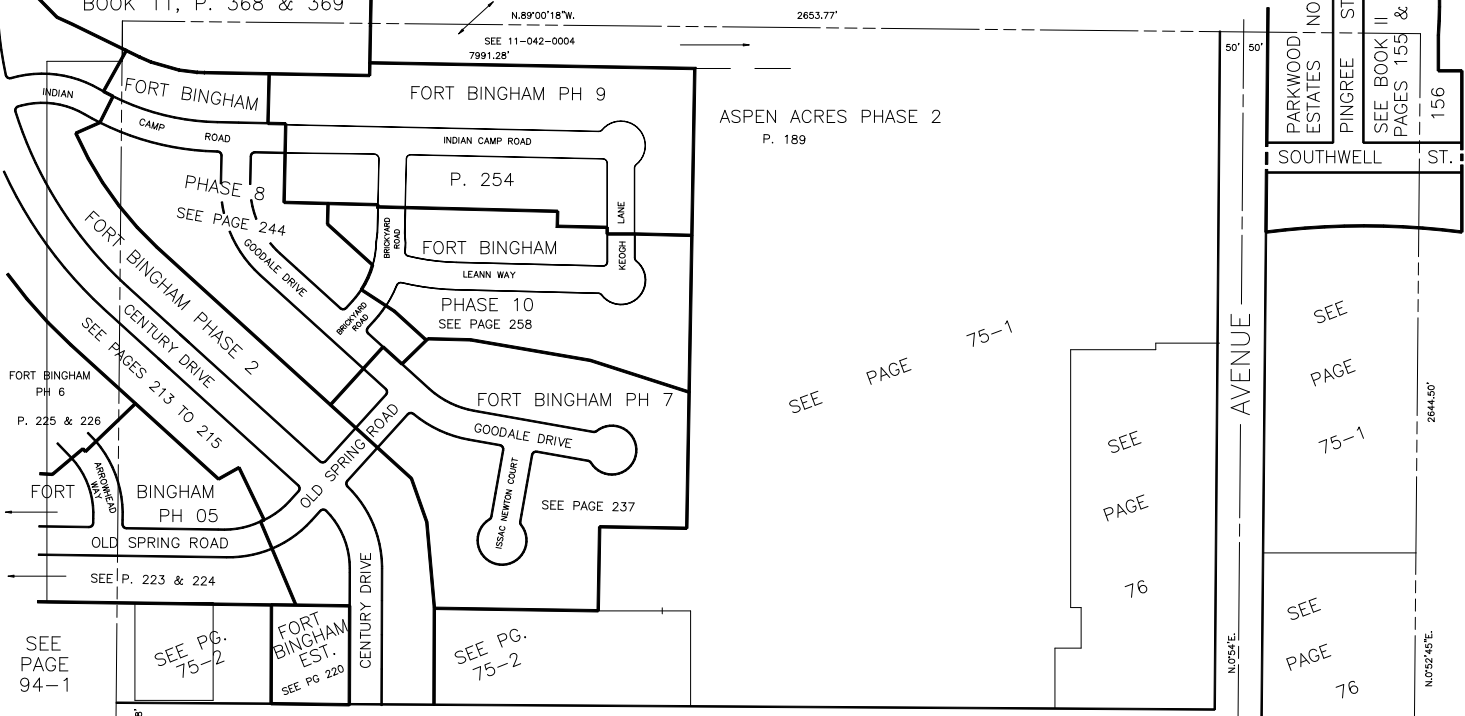
N.W. 1/4
SECTION 17, T.6N., R1W., S.L.B. & M.

TAXING UNIT: 25

IN OGDEN CITY
SCALE 1" = 200'

ALSO SEE PAGES 75-1, 2
SEE BOOK II, PAGE 43

FORT BINGHAM PH 4
BOOK 11, P. 368 & 369
SEE BOOK II, PAGE 42



FORT BINGHAM PH 6
P. 225 & 226
SEE P. 223 & 224
SEE PAGE 94-1

SEE PG. 75-2

FORT BINGHAM EST.
SEE PG 220

SEE PG. 75-2

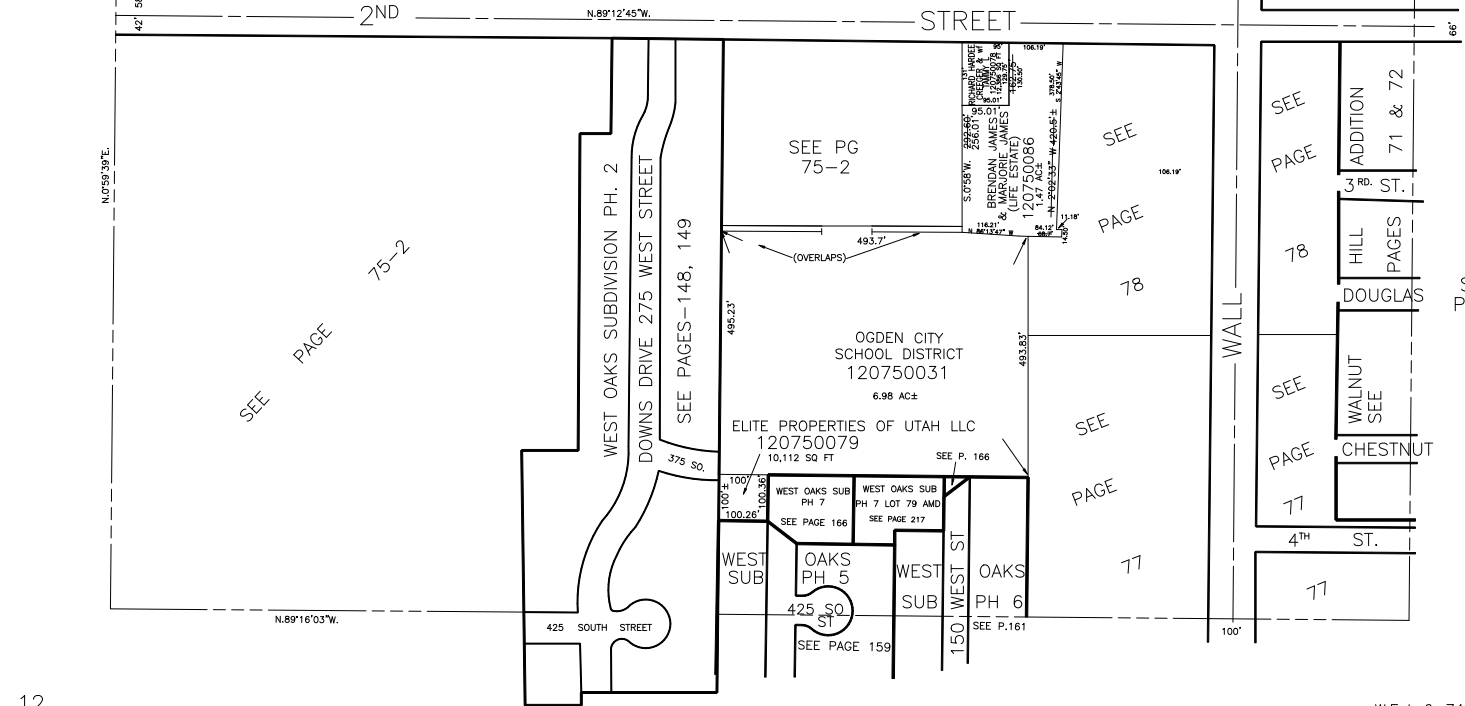
SEE PAGE 75-1

SEE PAGE 76

SEE PAGE 75-1

SEE PAGE 76

SEE PAGE 60



SEE PAGE 75-2

SEE PG 75-2

SEE PAGE 78

SEE PAGE 77

SEE PAGE 78

ADDITION 71 & 72

HILL PAGES

DOUGLAS

WALNUT SEE

CHESTNUT

SEE PAGE 70

SEE PAGE 91